

What are the Signs of an Illicit Discharge?

Sanitary Sewer Discharges

Observations:

- Sanitary debris
- Staining on pipe
- Soap suds
- Gray or discolored water
- Odors: sewage, rotten eggs or detergents

Contact:

IDEP coordinator and/or
DPW



Gray Staining



Soap Suds



*Broken Sanitary
Sewer*

Failed Septic Systems

Observations:

- Overgrown or wet patch of grass
- Cheater pipe to ditch
- Soap suds
- Gray or discolored water
- Odors: sewage, rotten eggs or detergents

Contact:

Health Department and/or
IDEP coordinator



Overgrown Septic Field



Cheater Pipe from Septic Field

Illegal Dumping, Spills or Floor Drain Connections

Observations:

- Oil sheen
- Stained sediment, rocks or vegetation
- Odor: petroleum, chemical

Contact:

IDEP coordinator or MDEQ



Oil Sheen

Industrial Discharges

Observations:

- Discolored water or vegetation
- Odor: petroleum, chemical

Contact:

IDEP coordinator and/or DPW



White Foam

Agricultural Runoff, Fertilizers, or Sanitary Sewer Waste

Observations:

- Algae growth near drain outlet or in a ditch

Contact:

IDEP coordinator, DPW and/or
Drain Office



Excessive Algae

Soil Erosion from Construction Sites

Observations:

- Bare soils or banks with no soil erosion control fencing
- Muddy discharge from an outfall

Contact:

Local soil erosion control agency
(either the local community or county)



Soil Erosion

Important Numbers

EMERGENCIES

- Police/Fire 911
- MDEQ Pollution Alert System (PEAS) 800-292-4706; 24 hrs

NON-EMERGENCIES

Livingston County:

- Health Department 517-546-9858; 8 am - 5 pm
- Drain Office 517-546-0040; 8 am - 5 pm

Macomb County:

- Health Department 586-469-5236; 8 am - 5 pm
- IDEP Hotline 877-679-4337; after 5 pm
- IDEP e-mail IDEP@macombcountymi.gov

Oakland County 248-858-0931; 24 hrs

St. Clair County 877-504-SWIM (7946); 24 hrs

Washtenaw County 734-222-3880; 8 am - 5 pm

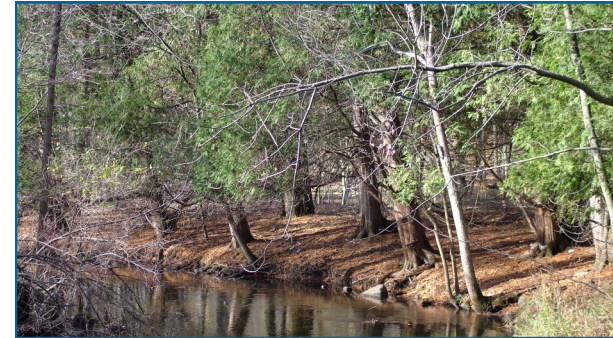
Wayne County 888-223-2363; 24 hrs

Laura Gruzowski, HRC 248-454-6856

Ron Fadoir, OCWRC 248-858-5248

How to Spot Illicit Discharges

A Tip Card for Municipal Staff



An illicit discharge is any discharge containing polluting material, such as sediment, nutrients, oil and bacteria. These discharges can drain to lakes and streams via storm drains. The communities in Southeast Michigan are required to prevent illicit discharges from entering storm water. You can do your part by notifying the appropriate agency when you spot a potential illicit discharge.

What to Report?

- Spills and contamination to lakes, rivers and streams
- Suspicious dumping to catch basins or waterways
- Unusual discharges from pipes
- Sewage on the ground or draining to surface water
- Large number of dead fish in waterways
- Failing or leaky septic systems
- Polluted runoff from storage piles or dumpsters to catch basins or waterways
- Sewage, detergent, chemical, petroleum or rotten egg odors
- Soil erosion from construction sites